

HOW TO USE PORTABLE OPENVPN CLIENT FOR WINDOWS

About Portable OpenVPN Client:

OpenVPN Portable by Lukas Landis is a modified OpenVPN Client as a portable application which allows you to connect to our OpenVPN servers on any computer including non-privileged computers .This is especially useful when you are using a public computer and you don't have the necessary permissions to install our windows OpenVPN client installer. This portable OpenVPN client has been tested with all our OpenVPN servers and it works fine.

Benefits of Portable OpenVPN Client:

Portable OpenVPN Client has all features of the standard OpenVPN client while providing you with additional benefits:

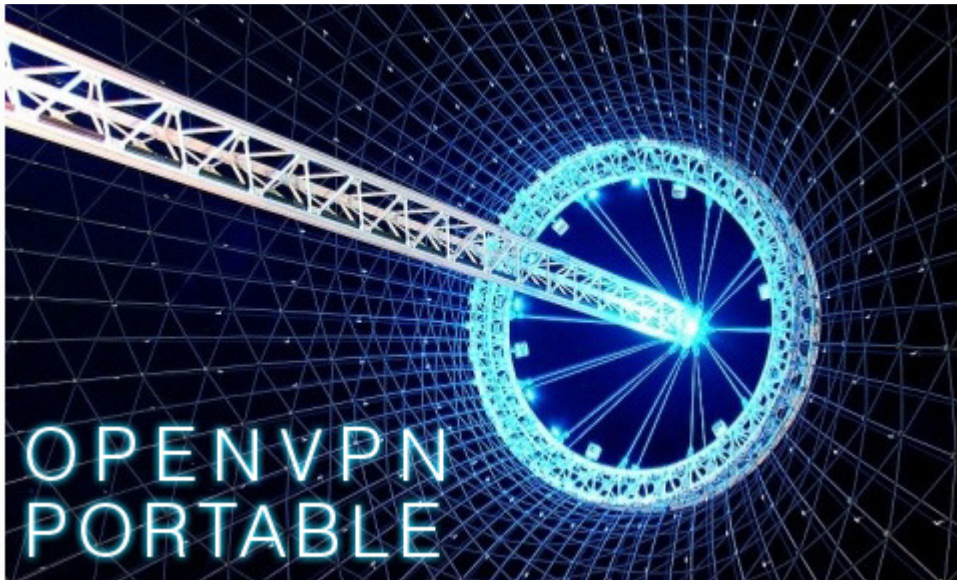
- Portable OpenVPN client requires no installation and can be run from removable media such as USB stick, Floppy, etc...
- You don't need Admin rights on a computer to run the program.
- Portable OpenVPN client can be used on a computer with guest access only (for example at Internet Cafe).

Using Portable OpenVPN Client:

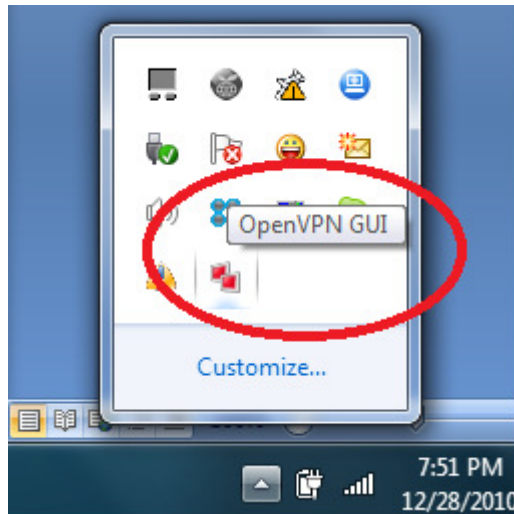
1. Download the portable OpenVPN client from:
<http://www.anonyproz.com/portableopenvpnclient.rar>
2. Decompress the archive file using any decompressing software such as Winzip or Winrar
3. After decompressing the file, you will find some folders and file as show below:

Name	Date modified	Type	Size
app	12/28/2010 7:05 PM	File folder	
data	12/28/2010 7:05 PM	File folder	
other	12/28/2010 7:05 PM	File folder	
OpenVPNPortable	2/9/2010 7:41 AM	Application	228 KB

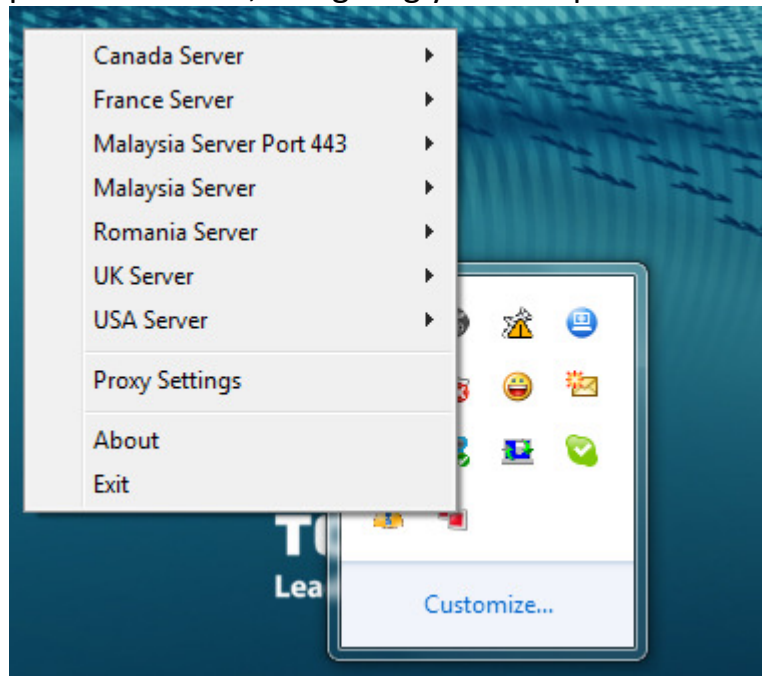
4. Double click on the “OpenVPNPortable” executable file. After double clicking, the following screen pops up :

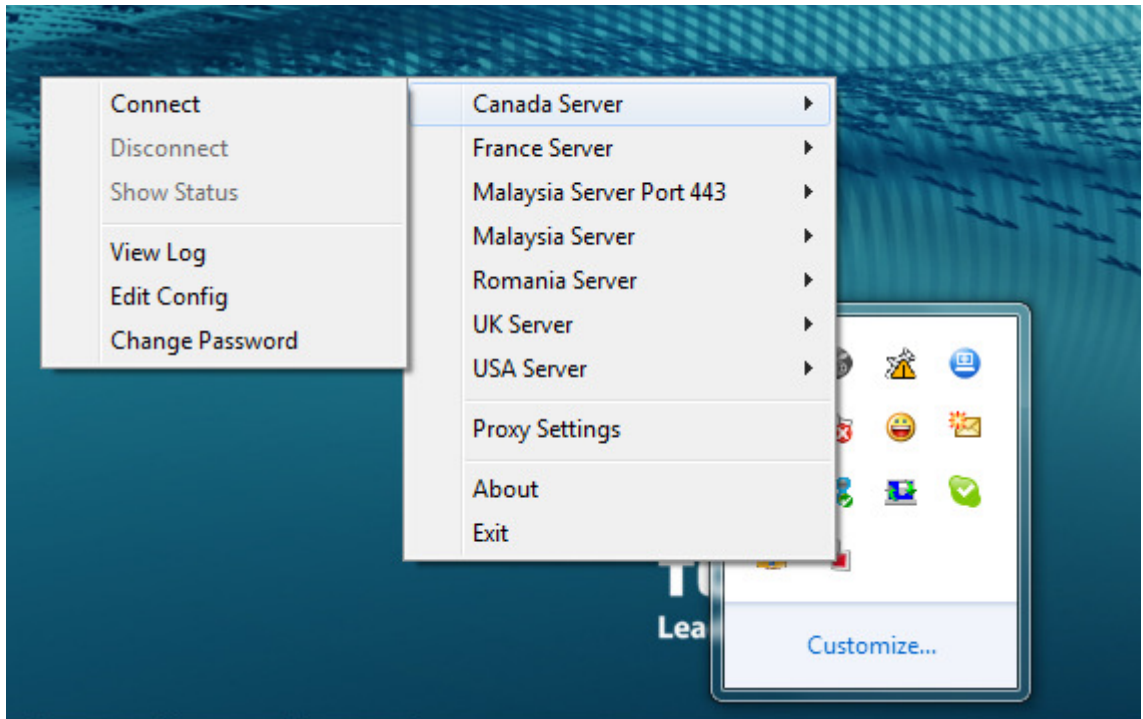


5. To start OpenVPN, first run the Portable OpenVPN GUI by double clicking on the desktop icon or start menu icon. The OpenVPN GUI is a system-tray applet, so a red icon for the GUI will appear in the lower-right corner of the screen as shown below:

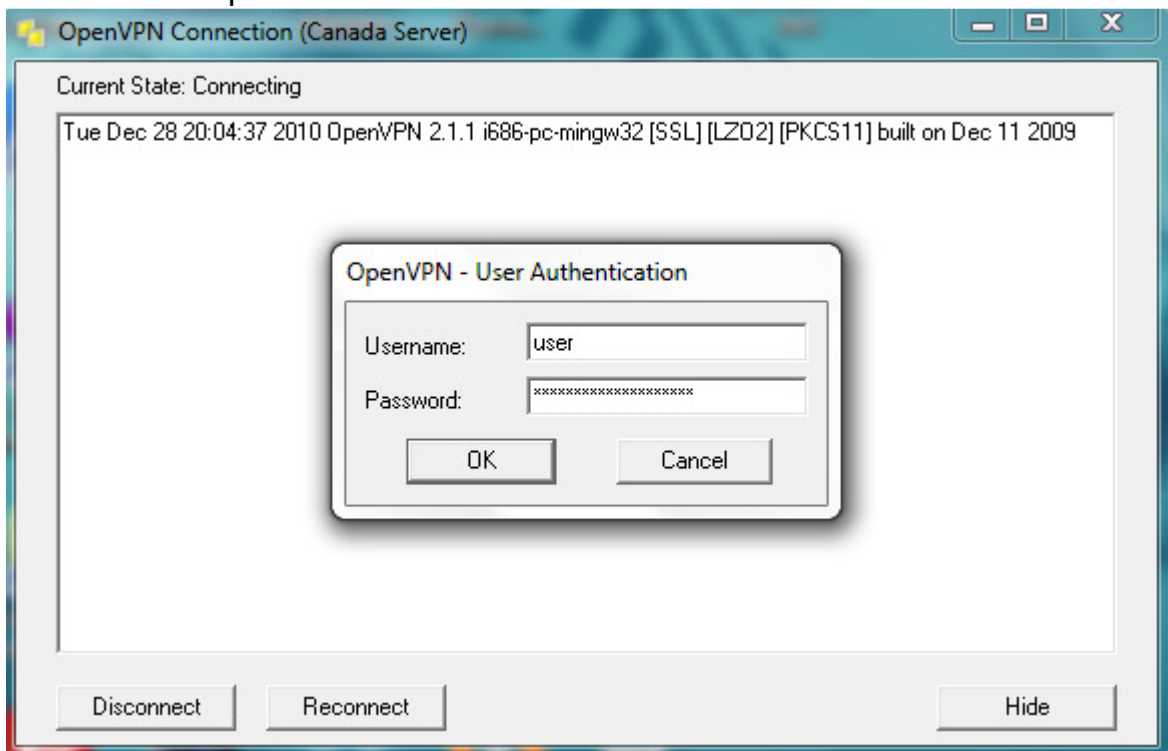


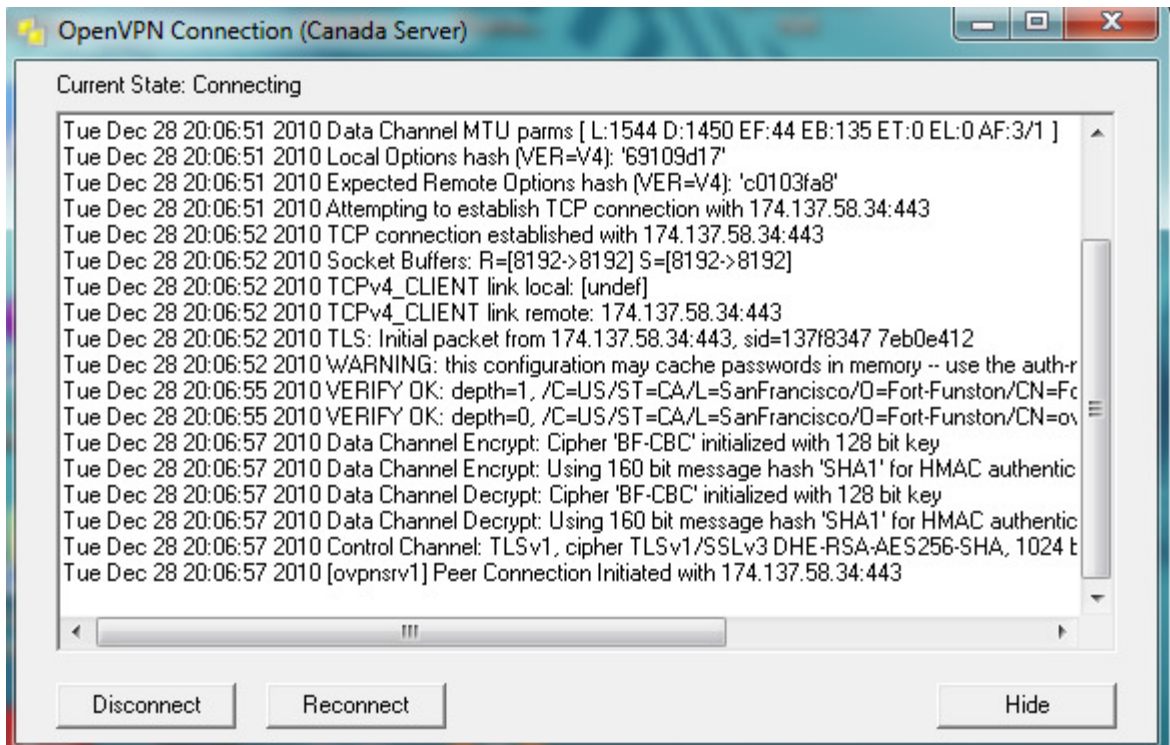
6. Right click on the system tray icon, and a menu should appear showing Anonyproz OpenVPN servers, and giving you the option to connect.





7. Choose any server of your choice and authenticate using your member username and password as shown below:





8. After successfully authenticating to the server, the red portable OpenVPN GUI icon will change to green indicating that a successful authentication has been made.

